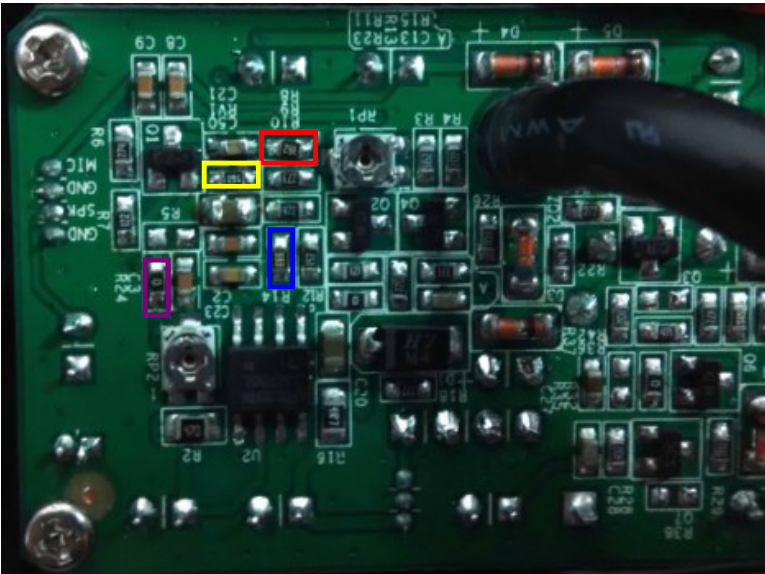


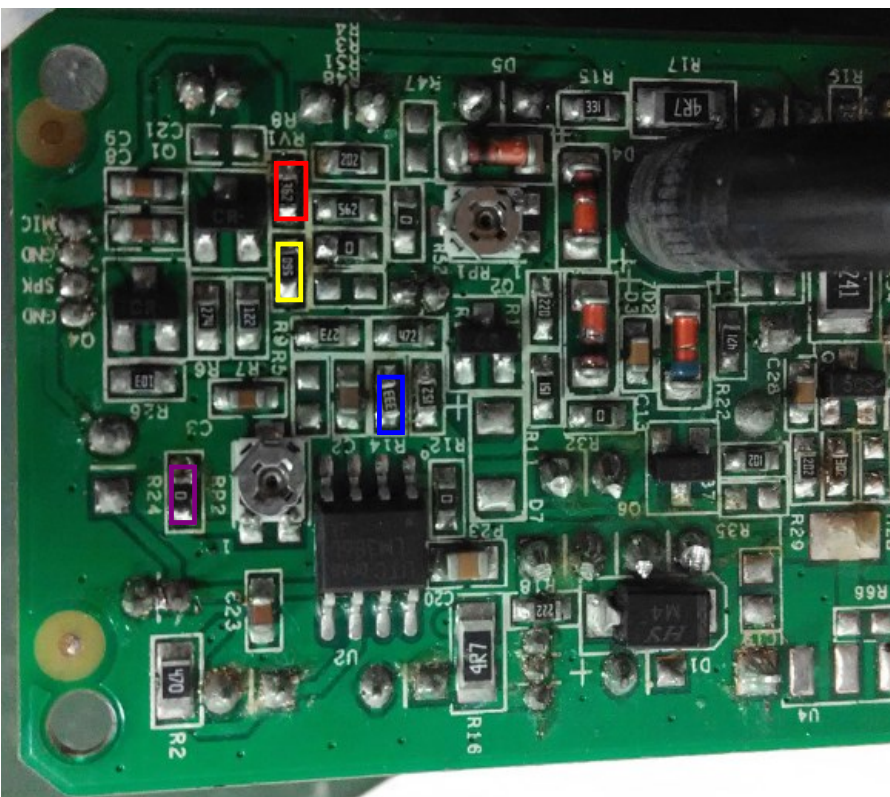
Please repair the PCB as the below descriptions :

PCB Version : 7106DOR VER.E



In the red frame resistor R8=3.6K ohm
In the yellow frame RV1=56 ohm
In the blue frame resistor R14=33Kohm
In the purple resistor R24=0ohm

PCB Version : 7106IPDOR VER.C



In the red frame resistor R8=3.6K ohm
In the yellow frame RV1=56 ohm
In the blue frame R14=33K ohm
In the purple frame R24=0 ohm